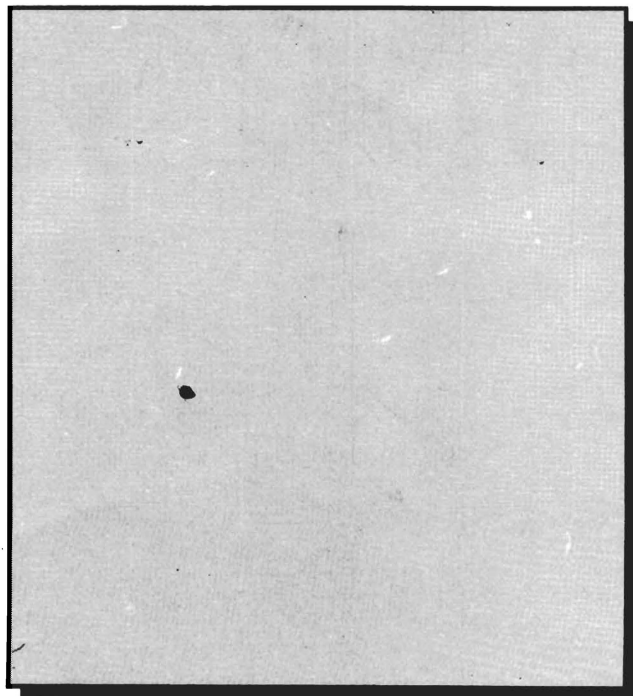
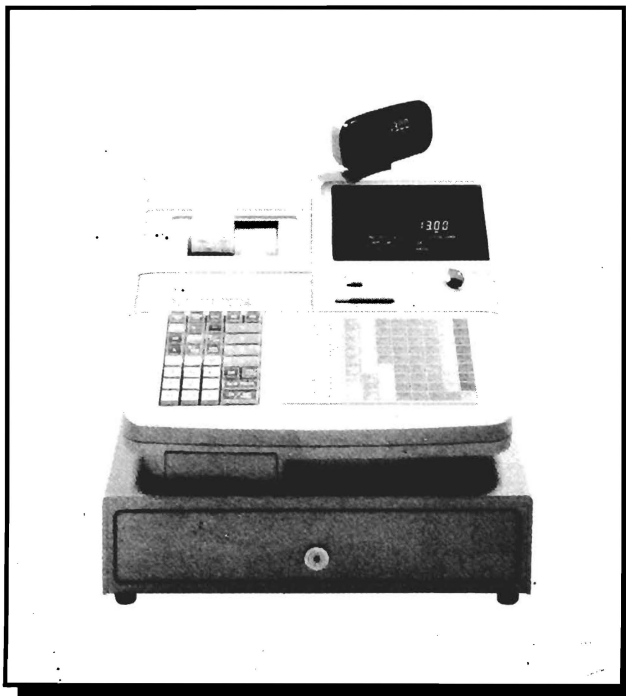
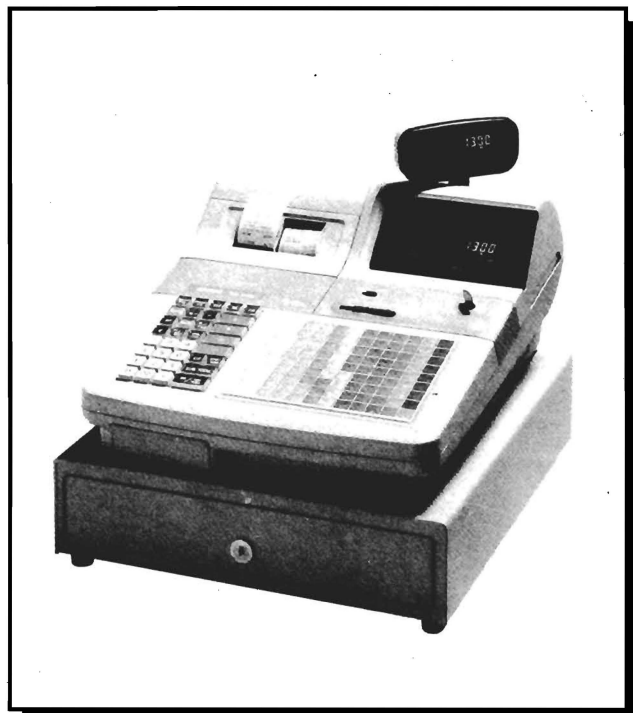
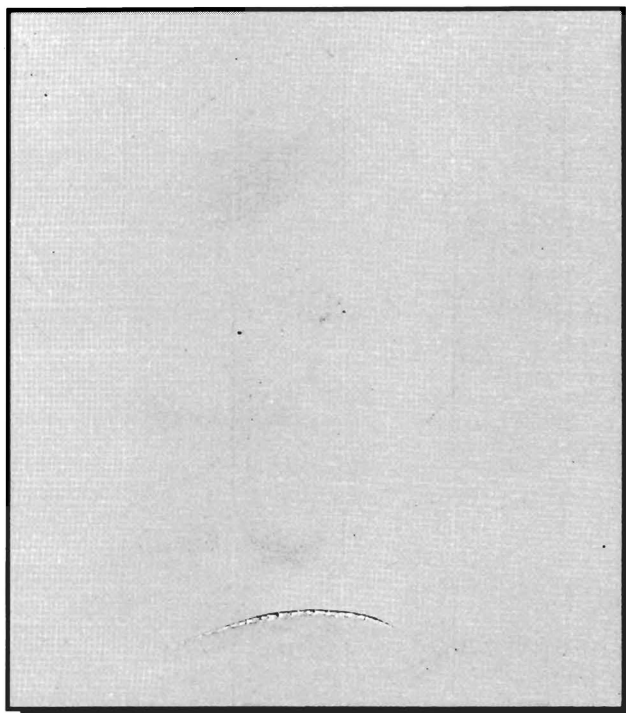


13  
101 3  
**ELECTRONIC CASH REGISTER**

# TK-1300

## OPERATION MANUAL



**CASIO®**

---

# Contents

---

1	Loading Receipt and Journal Paper .....	1
1-1	Removing Paper Rolls .....	1
	Receipt Paper .....	1
	Journal Paper .....	1
1-2	Loading Paper Rolls .....	2
	Receipt Paper .....	2
	Journal Paper .....	2
2	Before Starting .....	3
2-1	Long PLUs and Short PLUs .....	3
	Short PLUs .....	3
	Long PLUs .....	3
2-2	Errors .....	4
2-3	Rechargeable Batteries .....	4
2-4	Daily Register Operations .....	4
3	Basic Registrations .....	5
3-1	Assigning a Clerk .....	5
	Clerk Button .....	5
	Clerk Secret Number .....	5
	Training Clerk/Cashiers .....	6
3-2	Displaying the Time and Date .....	6
3-3	Making Change .....	6
3-4	Single Items and Cash Tenders .....	7
	Department Items .....	7
	Exceeding the Maximum Amount Limit .....	7
	Exceeding the Low Digit Limit .....	8
	Flat-Long PLU Items .....	8
	Flat-Long PLU Price Override .....	8
	PLU Items .....	9
	Sub-Department Items .....	9
	Random PLU Code Items (Long PLU Only) .....	9
3-5	Repeating Identical Items .....	10
	Department Items .....	10
	Flat-Long PLU Items .....	10
	Flat-Long PLU Price Override .....	10
	PLU Items .....	11
	Sub-Department Items .....	11
	Random PLU Code Items (Long PLUs Only) .....	11
3-6	Mixed Departments and PLUs .....	12
3-7	Subtraction .....	12
	Amount Reduction .....	12
	Discount for Item and Subtotal .....	13
3-8	Multiplication .....	14
	Department Items .....	14
	Flat-Long PLU Items .....	15
	PLU Items .....	16
	Sub-Department Items .....	16
	Random PLU Code Items (Long PLUs Only) .....	17

---

# Contents

---

	Split Sales of Packaged Items .....	17
	Method 1 .....	17
	Method 2 .....	17
	Measurement Extension for Sub-Department Item .....	18
	Measurement Extension for Random PLU Code Item (Long PLUs Only) .....	18
3-9	Taxable Transactions .....	19
	Tax Table 1 and Tax Table 2 .....	19
	Manual Tax and Tax Shift .....	19
	Rate Tax .....	20
	VAT Calculations .....	20
	Tax Exemption .....	21
3-10	Other Payment Media .....	22
	Check Payments .....	22
	Cashing Checks .....	23
	Charge Tender .....	23
	Credit Card Tender .....	24
	Mixed Tender .....	24
3-11	Switching Between REG 1 and REG 2 .....	25
3-12	Corrections .....	26
	Correction of Last Item Registered .....	26
	Correction of a Specific Item .....	26
	Cancellation of All Items Registered .....	26
3-13	Validation Slip Printing .....	27
3-14	Non-Sales Transactions .....	27
	Received on Account .....	27
	Paid Outs .....	28
	Pick Ups .....	28
3-15	Refunds .....	29
	Using the RF Mode .....	29
	To change from the Refund Mode to the Reg Minus Mode .....	29
	To change from the Reg Minus Mode to the Refund Mode .....	29
	Reg Minus Mode .....	30
	Normal Refund Transaction .....	30
	Subtraction and Discounts .....	30
	Refund Mode .....	30
	Normal Refund Transaction .....	30
	Subtraction and Discounts .....	31
	Refunds in the Reg 1 and Reg 2 Modes .....	31
4	Advanced Registration Functions .....	32
4-1	Registering Loan Amounts .....	32
4-2	Single Item Cash Sales .....	32
4-3	Shifting Menus .....	33
4-4	Addition .....	34
	Additional Charge .....	34
	Premium for Item and Subtotal .....	35
4-5	Tray Total Premium/Discount .....	36
4-6	Coupon Transactions .....	37
	Coupon Registration Using the Coupon Key .....	37
	Coupon Registration Using the Coupon 2 Key .....	38
4-7	Preset Tender Amounts .....	39

---

# Contents

---

4-8	Bottle Link Operation (Long PLU Only) .....	40
4-9	Bottle Returns .....	41
	Linked Bottle Return Key (Long PLU Only) .....	41
	Bottle Return Key .....	41
4-10	Arrangement Key Registrations .....	42
4-11	Set Menus .....	43
	Set Menus Using PLU Numbers (Long PLUs Only) .....	43
	Set Menus Using Flat-Long PLU Keys .....	44
4-12	Tips .....	44
4-13	Inputting the Number of Customers .....	45
4-14	Multiple Item Totaling Function .....	46
4-15	Text Recall Function .....	47
	Recalled Text .....	47
4-16	Foreign Currency Registration .....	47
	Conversion of a foreign currency to the local currency .....	48
	Partial amount tender in a foreign currency .....	48
	Full amount tender in a foreign currency .....	48
4-17	Temporarily Releasing Compulsories .....	49
4-18	Text Print Function .....	50
4-19	Food Stamps .....	51
	No Change Due .....	51
	Food Stamp Status Shift .....	51
	Mixed Food Stamp/Cash Change .....	52
	Food Stamp Transaction .....	54
	Cash Transaction .....	54
4-20	Food Stamps (Illinois Rules) .....	54
	No Change Due .....	54
	Food Stamp Status Shift .....	56
	Mixed Food Stamp/Cash Change .....	56
	Food Stamp Transaction .....	58
	Cash Transaction .....	58
	Food Stamp + Taxable 1 and Taxable 2 .....	58
	Method 1 .....	58
	Method 2 .....	59
4-21	Food Stamps (New Jersey Rules) .....	60
	No Change Due .....	60
	Food Stamp Status Shift .....	61
	Mixed Food Stamp/Cash Change .....	61
	Food Stamp Transaction .....	63
	Cash Transaction .....	63
4-22	Electronic Benefits Transfer Tenders .....	64
	About Mixed EBT Card Tenders .....	64
	No Change Due .....	64
	Change Due .....	65
4-23	Gas Departments .....	66
	Basic Registration .....	66
	Calculation of Discounts .....	66
	Discount Subtotal Key Operation .....	67
	Partial Cash Tender .....	68
	Error Correction .....	69
4-24	New Balance and Previous Balance .....	69

---

# Contents

---

How the New Balance Totalizer works .....	69
Non-Taxable Transactions .....	70
First Transaction .....	70
Second Transaction .....	70
Taxable Transaction — 1 .....	71
First Transaction .....	71
Second Transaction .....	71
Taxable Transaction — 2 .....	72
First Transaction .....	72
Second Transaction .....	72
Taxable Transaction — 3 .....	72
First Transaction .....	72
Second Transaction .....	73
4-25 Registrations that Move the Decimal Point .....	73
4-26 VAT Breakdown Printing .....	73
4-27 Deposit Registrations .....	74
Deposit Plus Key .....	74
Deposit Minus Key .....	74
5 Read and Reset Reports .....	75
5-1 Daily Sales Data READ (X1 Mode) .....	75
To prepare for daily sales data read .....	75
5-2 Resetting Daily Sales Data (Z1 Mode) .....	76
To prepare for daily sales data reset .....	76
5-3 Periodic Sales Read and Reset (X2/Z2 Mode) .....	76
To prepare for periodic sales data read and reset .....	77
5-4 Issuing Reports .....	77
Read and Reset Reports .....	77
Programmability .....	78
Issuing Reports .....	78
Individual Read Reports .....	78
Individual Department .....	78
Individual Short PLU .....	78
Individual Long PLU .....	78
Individual Flat-Long PLU .....	79
Individual Read/Reset Reports .....	79
Individual Clerk Accountability .....	79
PLU Range Read/Reset Reports .....	79
PLU Daily Sales Range .....	79
PLU Periodic Sales Range .....	80
Individual Totalizer Reports .....	81
Report Code Table .....	81
To issue daily sales reset reports .....	81
To issue periodic sales read/reset reports .....	82
Financial Report .....	82
Batch Report Issuance for Report Groups .....	82
To batch issue reports .....	82
Example Report Printouts .....	83
6 For the Manager .....	86
6-1 Manager Control Mode (X1 Mode) .....	86
Entering the Manager Control Mode .....	86
6-2 Assigning Drawers for Each Clerk .....	87

---

# Contents

---

6-3	Program 1 Programming .....	87
	To enter the Program 1 Mode .....	87
	To exit the Program 1 Mode .....	87
7	General Guide .....	88
7-1	Mode Switch and Keys .....	88
	Mode Switch .....	88
	MODE Control Keys .....	89
	United States/Canada/U.K. ....	89
	Other Areas .....	89
7-2	Keyboard and Keys .....	89
	United States and Canada .....	90
	Other Areas .....	90
	Micro-Touch Keyboard .....	90
	Changing Menu Sheets .....	91
	Numeric Keys .....	91
	Department Keys .....	91
	Flat-Long PLU Keys .....	91
	Function Keys .....	91
7-3	Displays .....	96
	Operator Display .....	96
	Rotary Customer Display .....	97
7-4	Printer .....	98
	Journal .....	98
	Receipts .....	98
	Receipt ON/OFF Switch .....	99
	Post-Finalization Receipts .....	99
	Validation .....	100
	Item Validation .....	100
	Subtotal Validation .....	100
	Total Amount Validation .....	100
	Paper Feed Keys .....	100
	Printer Key .....	101
	Caring for the Printer .....	101
	Stamp Ink Replenishment .....	101
	Replacing the Ink Ribbon Cassette .....	101
7-5	Cash Drawer .....	102
	Connecting the drawer .....	102
8	Troubleshooting .....	103
9	Error Messages .....	104
10	Memory Protection Battery .....	105
11	Options .....	106
12	Specifications .....	107

This is a “Table of Contents preview” for quality assurance

The full manual can be purchased from our store:

[https://the-checkout-tech.com/manuals/casio/TK-1300 operation manual.html](https://the-checkout-tech.com/manuals/casio/TK-1300%20operation%20manual.html)

And our free Online Keysheet maker:

<https://the-checkout-tech.com/Cash-Register-Keysheet-Creator/>

[HTTPS://THE-CHECKOUT-TECH.COM](https://THE-CHECKOUT-TECH.COM)